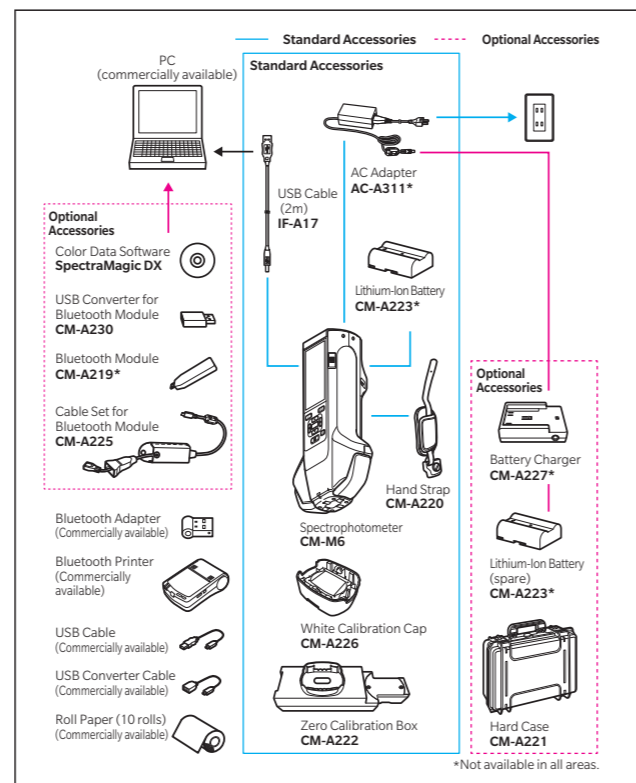


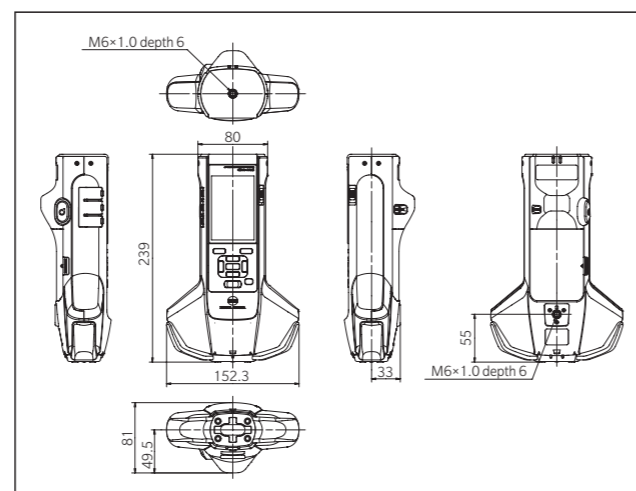
## Main Specifications

Model	Spectrophotometer CM-M6
Illumination/viewing system	45° illumination : -15°/15°/25°/45°/75°/110° aspecular viewing angles with double-path technology
Detector	Dual 40-element silicon photodiode arrays
Spectral separation device	Linear variable filter
Wavelength range	400-700 nm
Wavelength pitch	10 nm
Measurement range	6 angles: 0-600%; Output/display resolution :0.01 %
Light source	High-CRI white LED
Measurement time	Approx. 4.5 seconds
Minimum measurement interval	Approx. 5 seconds
Battery performance	Approx. 1,500 measurements/charge (at 10-second intervals at 23°C)
Measurement/illumination area	Ø6 mm/Ø12 mm
Repeatability	Chromaticity value :Standard deviation within $\Delta E^*ab$ 0.05 (When a white calibration plate is measured 30 times at 10-second intervals after white calibration)
Inter-instrument agreement	Within $\Delta E^*ab$ 0.2 (Typical) (Based on 12 BCRA Series II color tiles compared to values measured with a master body under Konica Minolta standard measurement conditions)
Observer	2° or 10° Standard Observer
Illuminant	A, C, D50, D65, F2, F6, F7, F8, F10, F11, F12 (simultaneous evaluation with two illuminants possible)
Displayed data	Colorimetric values, color-difference values/graph, line graph (colorimetric/color-difference values), pass/fail judgement
Colorimetric data	$L^*a^*b^*$ , $L^*C^*h$
Indexes	MI, FF value (Flop value)
Color-difference formula	$\Delta E^*ab$ (CIE 1976), $\Delta(L^*a^*b^*)$ , $\Delta(L^*C^*H^*)$ , CMC (1:c), $\Delta E^*94$ (CIE 1994), $\Delta E00$ (CIE DE2000), $\Delta E$ (DIN 6175)
Data memory	Target data: 200 measurements; Sample data: 800 measurements
Pass/Fail judgement	Tolerances can be set for color-difference values
Displayed languages	Japanese, English, German, French, Italian, Spanish, Chinese (Simplified), Portuguese, Russian, Turkish, Polish
Display	3.5-inch TFT color LCD
Interfaces	USB2.0, Bluetooth (Option)
Power	Rechargeable lithium-ion battery (removable), dedicated AC adapter
Charging time	Approx. 5 hours when no charge remains
Operation temperature/humidity range	0-40 °C, relative humidity is 85% or less (at 35 °C) with no condensation
Storage temperature/humidity range	-20-45 °C, relative humidity is 85% or less (at 35 °C) with no condensation
Size (W×H×D)	Approx. 152 × 239 × 81 mm
Weight	Approx. 1.1 kg (Including battery)

## System Diagram



## Dimensions (Units : mm)



- KONICA MINOLTA, the Konica Minolta logo and symbol mark, "Giving Shape to Ideas" and SpectraMagic are registered trademarks or trademarks of Konica Minolta, Inc.
- Bluetooth® is a registered trademark of Bluetooth SIG, Inc. and is used under license agreement.
- Displays shown are for illustration purpose only.
- The specifications and appearance shown herein are subject to change without notice.



## SAFETY PRECAUTIONS

For correct use and for your safety, be sure to read the instruction manual before using the instrument.

- Always connect the instrument to the specified power supply voltage. Improper connection may cause a fire or electric shock.
- Be sure to use the specified batteries. Using improper batteries may cause a fire or electric shock.



Certificate No : LRQ 0960094/A  
Registration Date : March 3, 1995



Certificate No : JQA-E-80027  
Registration Date : March 12, 1997

**KONICA MINOLTA, INC.**  
Konica Minolta Sensing Americas, Inc.  
Konica Minolta Sensing Europe B.V.

Osaka, Japan  
New Jersey, U.S.A.  
European Headquarter /BENELUX  
German Office  
French Office  
UK Office  
Italian Office  
Swiss Office  
Nordic Office  
Polish Office  
SE Sales Division  
Beijing Office  
Guangzhou Office  
Chongqing Office  
Qingdao Office  
Wuhan Office

Phone : 888-473-2656 (in USA), 201-236-4300 (outside USA)  
Nieuwegein, Netherlands  
München, Germany  
Roissy CDG, France  
Warrington, United Kingdom  
Cinisello Balsamo, Italy  
Dietikon, Switzerland  
Västra Frölunda, Sweden  
Wrocław, Poland  
Shanghai, China  
Beijing, China  
Guangdong, China  
Chongqing, China  
Shandong, China  
Hubei, China  
Singapore  
Goyang-si, Korea

Phone : +31 (0) 30 248-1193  
Phone : +49 (0) 89 4357 156 0  
Phone : +33 (0) 1 80 11 10 70  
Phone : +44 (0) 1925 467300  
Phone : +39 02849488.00  
Phone : +41 (0) 43 322-9800  
Phone : +46 (0) 31 7099464  
Phone : +48 (0) 71 73452-11  
Phone : +86- (0)21-5489 0202  
Phone : +86- (0)10-8522 1551  
Phone : +86- (0)20-3826 4220  
Phone : +86- (0)23-6773 4988  
Phone : +86- (0)532-8079 1871  
Phone : +86- (0)27-8544 9942  
Phone : +65 6563-5533  
Phone : +82 (0) 2-523-9726

Fax : 201-785-2482  
Fax : +31 (0) 30 248-1280  
Fax : +49 (0) 89 4357 156 99  
Fax : +33 (0) 1 80 11 10 82  
Fax : +44 (0) 1925 711143  
Fax : +39 02849488.30  
Fax : +41 (0) 43 322-9809  
Fax : +48 (0) 71 734 52 10  
Fax : +86- (0)21-5489 0005  
Fax : +86- (0)10-8522 1241  
Fax : +86- (0)20-3826 4223  
Fax : +86- (0)23-6773 4799  
Fax : +86- (0)532-8079 1873  
Fax : +86- (0)27-8544 9991  
Fax : +65 6560-9721  
Fax : +82 (0) 31-995-6511

**Konica Minolta (CHINA) Investment Ltd.**

**Konica Minolta Sensing Singapore Pte Ltd.**  
**Konica Minolta Sensing Korea Co., Ltd.**

Addresses and telephone/fax numbers are subject to change without notice. For the latest contact information, please refer to the KONICA MINOLTA Worldwide Offices web page :

©2016 KONICA MINOLTA, INC.

<http://konicaminolta.com/instruments/network>

9242-4843-20 BGJPK Printed in Japan



NEW

# Spectrophotometer CM-M6

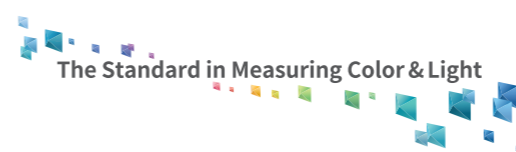
1

## High precision, multi-angle model for measuring automotive exteriors from 6 angles!

Innovative "double-path optical system" enables stable measuring even on curved surfaces!

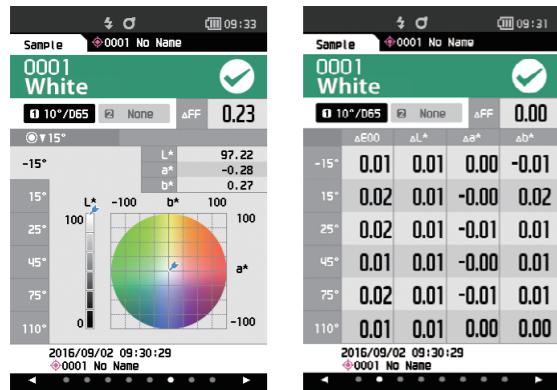
Compact, lightweight vertical format designed for measuring vehicle exteriors!

Ø6 mm diameter viewing beam for measuring small surfaces!



Giving Shape to Ideas

### Display examples

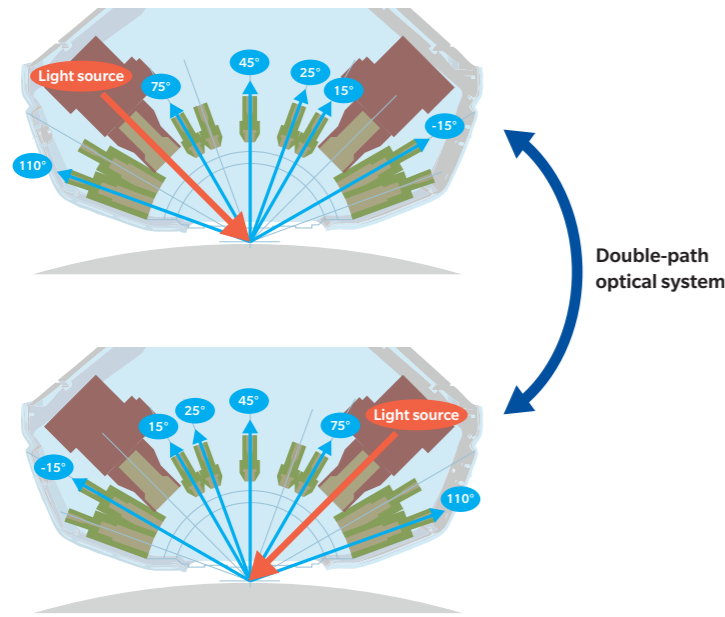


The CM-M6 has a built-in 3.5-inch color LCD that can display measured values both numerically and on colored graphs, for easier visualization of results.

**The CM-M6 is a compact, lightweight, multi-angle spectrophotometer. Incorporating a new patented 'double-path optical system', it exhibits outstanding versatility in measuring automotive exteriors.**



### Multi-angle measurements (1 light source, 6 viewing angles)



Double-path optical system

Illumination angle: 45°

Aspecular viewing angles: -15°, 15°, 25°, 45°, 75°, 110°

\* These 6 viewing angles make it possible to detect metallic and pearl colors with higher accuracy than previous spectrophotometers.

### Double-path optical system

The CM-M6 has duplicate illumination/viewing systems symmetrical about its center axis. This system ensures high measuring stability even when the colorimeter is slightly tilted and makes it possible to stably measure R300 curved surfaces like side mirrors.

### Compact, lightweight, vertical format



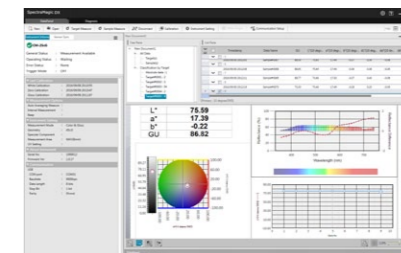
The compact body (with hand strap) can be stably held with one or two hands. Moreover, it is loaded with features ideal for measuring vehicle exteriors such as a rubber cover around the measurement aperture to safeguard measurement subjects against scratching and Bluetooth® support (option) for sending measurement data to remote devices over wireless connections.

### Ø6 mm diameter viewing beam for measuring small surfaces



The viewing beam is 6 mm in diameter, so small surfaces that were hard to measure with earlier models can be stably measured.

### Color Data Software SpectraMagic DX (Option) Professional Edition (Version. 1.0) Lite Edition



The new Color Data Software SpectraMagic DX enables easy management of data measured with the CM-M6, and offers a new Instrument Diagnosis function to help ensure continued high instrument performance.

- OS : Windows® 7 Pro 32-bit / 64-bit, Windows® 8.1 Pro 32-bit / 64-bit, Windows® 10 Pro 32-bit / 64-bit
- CPU : Intel® Core i5 2.7GHz or higher (recommended)
- Memory : At least 2 GB (4 GB or more recommended)
- Hard disk : 20 GB of available hard disk space  
At least 10 GB of available disk space is required on the system drive (drive where the OS is installed) for database.
- Display : Display hardware capable of displaying 1,280 x 768 pixels/16-bit color or better
- Other : Two USB ports required for protection key if used. Not necessary for electronic license.  
USB or serial port required for connection to instrument.
- Compatible Instruments : CM-25cG, CM-M6, CM-2500c

• Windows® is a trademark or registered trademark of Microsoft Corporation in the USA and other countries.  
• Intel® Core is a trademark or registered trademark of Intel Corporation in the USA and other countries.