



KONICA MINOLTA

NEW MODELS

MULTI GLOSS 268A
UNI GLOSS 60A
UNI GLOSS 60CT
UNI GLOSS 60S

1

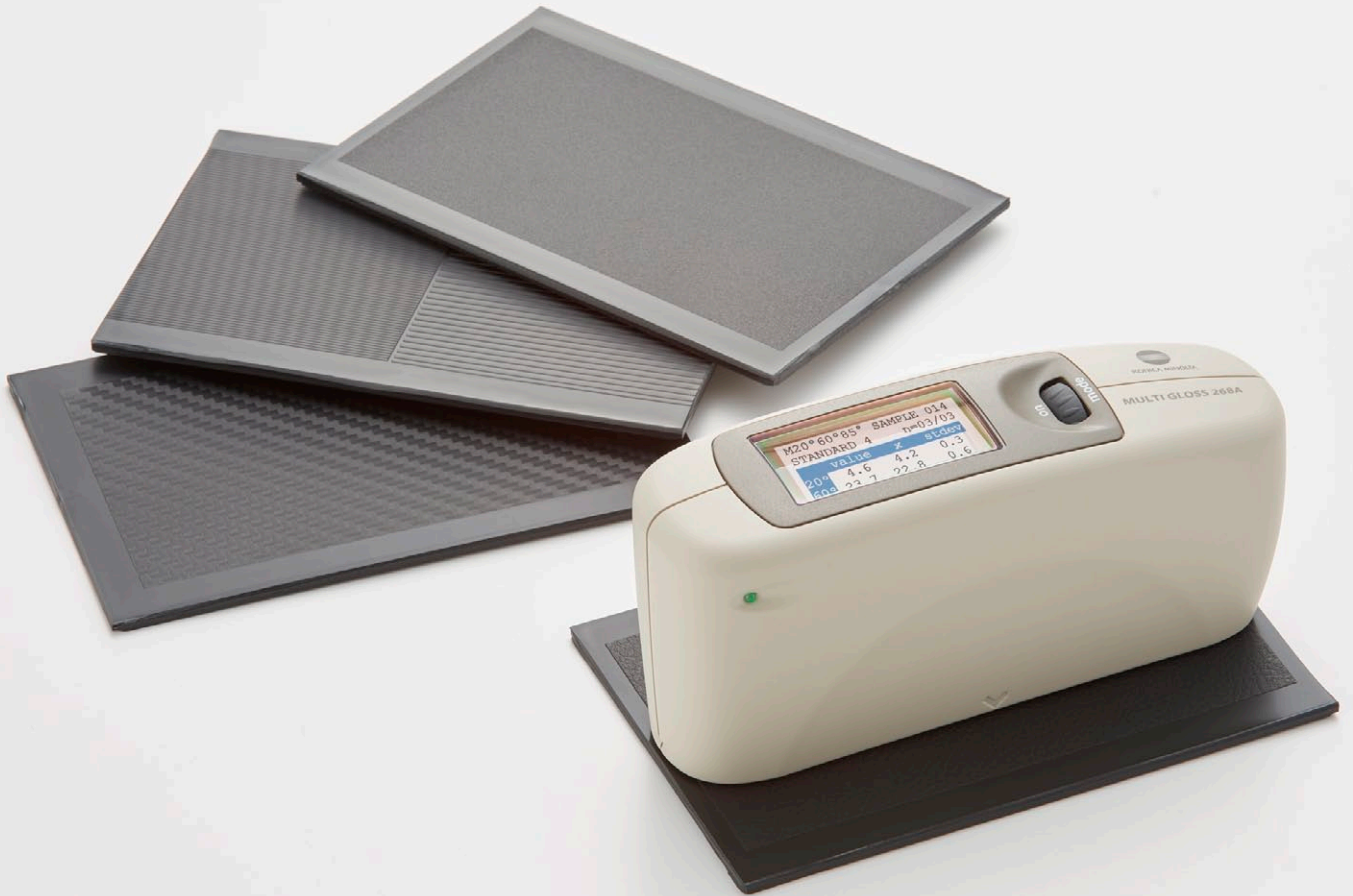


New GM series gloss meters offer even higher versatility !



■ **MULTI GLOSS 268A** (Measurement geometry: 20°, 60°, 85°; Successor to MULTI GLOSS 268Plus)

■ **UNIL GLOSS 60A** (Measurement geometry: 60°; Successor to UNI GLOSS 60Plus)



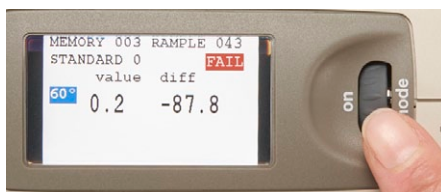
[Main features]

- Color LCD greatly improves usability and viewing of measurement results.
- New software "smart-lab Gloss" comes standard with the instrument, allowing you to transfer data from the instrument to a PC or to take online measurements.
- A single AA alkaline battery provides approximately 4,000 measurements.
- Display in ten languages.
- * Communication via USB only.

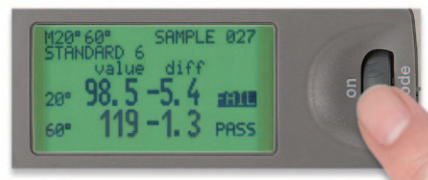
[Screen examples]

<pre> Main menu ├── Geometry ├── Memory ├── Difference ├── Calibration └── Setup </pre>	<pre> Geometry ├── 20° ├── 60° ├── 85° ├── 20°60° ✓ ├── 60°85° └── 20°60°85° </pre>	<pre> M20°60°85° SAMPLE 014 STANDARD 1 n=03/03 value x stdev 20° 4.6 4.2 0.3 60° 23.7 22.8 0.6 85° 28.5 27.8 0.5 </pre>	<pre> M20°60°85° SAMPLE 016 STANDARD 4 value diff 20° 4.1 -9.9 FAIL 60° 22.2 85° 27.7 </pre>	<pre> Autodiagnosis Please clean standard Confirm → [mode] Cancel → [operate] </pre>
-------------------------------------------------------------------------------------------------	---------------------------------------------------------------------------------------------	---------------------------------------------------------------------------------------------------------------------------------	------------------------------------------------------------------------------------------------------	-----------------------------------------------------------------------------------------------

● Brighter, easier-to-read display



New GM series model



Previous model

■ UNI GLOSS 60CT (Measurement geometry: 60°) High inter-instrument agreement model

With high measurement accuracy at low gloss levels, this model is suitable when multiple glossmeters are used in your company or between your company and suppliers or customers. It can be used for measuring the interior parts of cars, etc.



Repeatability : 0.1 GU from 0.0 to 19.9 GU
(0.2 GU for UNI GLOSS 60A)

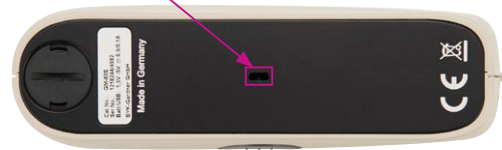
Inter-instrument agreement : 0.2 GU from 0.0 to 19.9 GU
(0.5 GU for UNI GLOSS 60A)

■ UNI GLOSS 60S (Measurement geometry: 60°) Small aperture model

The small measurement area of 2 mm x 4 mm is suitable for measuring minute areas or curved surfaces.



Measurement area: 2 mm x 4 mm (9 mm x 15 mm for UNI GLOSS 60A)



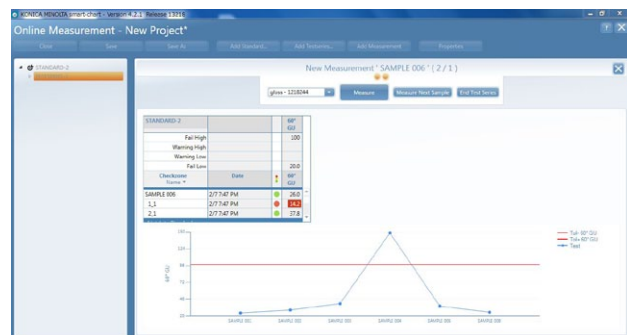
■ Gloss Data Software smart-chart (smart-lab Gloss)

● Outline

- Allows transferring data measured off-line from the instrument to a PC or taking on-line measurements.
- Allows creating professional QC reports with graphs and/or tables.
- Standard specifications can be set to enable Pass, Warning, or Fail judgement display and inclusion in reports.
- Allows expressing the stability of a manufacturing process as a trend graph per project for management of laboratory work.

● Main features

- Data transfer from the instrument to a PC
- On-line measurement with the instrument connected to a PC
- Creation of reports
- Determination of Pass/Warning/Fail
- Display of trend graphs



● Specifications

<System requirements>

OS : Windows® 7 SP1 or 8
 CPU : Core 2 Duo, 2.2 GHz, i7 or higher (recommended)
 Memory : 4 GB RAM (8 GB or more recommended)
 Hard disk : 300 MB of available hard disk space
 Display : 1,280 x 1,024 pixels or better
 Interface : USB port

<Compatible instruments>

MULTI GLOSS 268A, UNI GLOSS 60A, UNI GLOSS 60CT, UNI GLOSS 60S

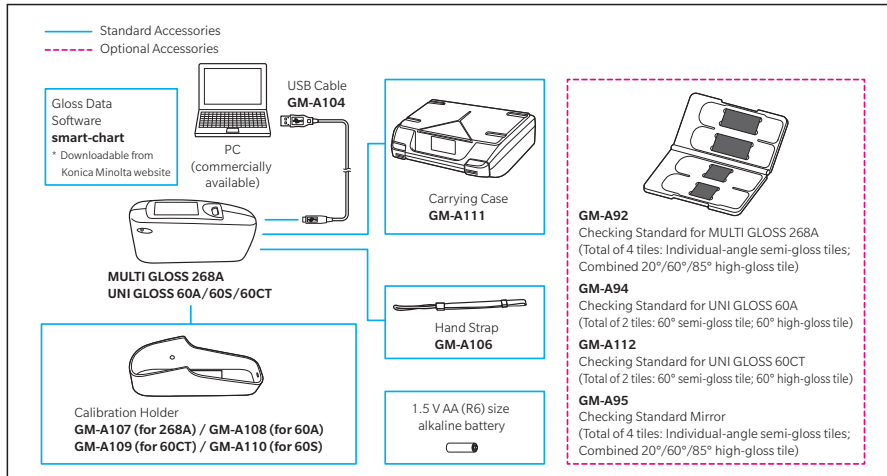
* Not compatible with MUTLI GLOSS 268Plus, UNI GLOSS 60Plus

* Customers who have purchased a compatible GM series model (MULTI GLOSS 268A, UNI GLOSS 60A, UNI GLOSS 60CT, or UNI GLOSS 60S) can download the software from our website free of charge.

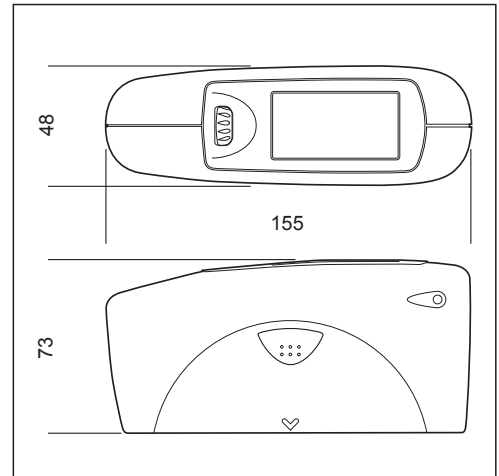
Main Specifications

Model	MULTI GLOSS 268A	UNI GLOSS 60A	UNI GLOSS 60S	UNI GLOSS 60CT
Measurement geometry	20°, 60°, 85°	60°	60°	60°
Size of measurement spot	20°: 10 × 10 mm	–	–	–
	60°: 9 × 15 mm	60°: 9 × 15 mm	60°: 2 × 4 mm	60°: 9 × 15 mm
	85°: 5 × 38 mm	–	–	–
Standard compliance	ISO 2813, ASTM D 523, ASTM D 2457, DIN 67530, ISO 7668 (excluding UNI GLOSS 60S), JIS Z 8741 (excluding UNI GLOSS 60S)			
Measurement range	20°: 0.0 to 2,000 GU	–	–	–
	60°: 0.0 to 1,000 GU	60°: 0.0 to 1,000 GU	60°: 0.0 to 1,000 GU	60°: 0.0 to 1,000 GU
	85°: 0.0 to 160 GU	–	–	–
Resolution	0.0 to 99.9 GU : 0.1 GU 100 to 2,000 GU : 1 GU			
Repeatability	0.0 to 99.9 GU : 0.2 GU 100 to 2,000 GU : 0.2% of reading			0.0 to 19.9 GU : 0.1 GU 20.0 to 99.9 GU : 0.2 GU 100 to 2,000 GU : 0.2% of reading
Inter-instrument agreement	0.0 to 99.9 GU : 0.5 GU 100 to 2,000 GU : 0.5% of reading			0.0 to 19.9 GU : 0.2 GU 20.0 to 99.9 GU : 0.5 GU 100 to 2,000 GU : 0.5% of reading
Memory	999 measurements with date and time			
Difference measurement	Memory for 50 standard			
Battery performance	Approx. 4,000 measurements (when using 1.5 V AA (R6) size alkaline battery)			
Measurement time	0.5 seconds			
Auto power off	10 to 99 seconds selectable			
Languages	English, Spanish, German, French, Italian, Russian, Polish, Portuguese, Turkish, Japanese			
Measurement mode	Normal mode (Sample mode, Statistics, Continuous, Basic mode); Difference mode			
Interface	USB 2.0			
Operation temperature/humidity range	15 to 40°C relative humidity max. 85% (at 35°C) with no condensation			
Storage temperature/humidity range	-10 to 60°C relative humidity max. 85% (at 35°C) with no condensation			
Power	1.5 V AA (R6) size alkaline battery, or via USB-port of PC			
Size (W x H x D)	155 × 73 × 48 mm			
Weight	400 g			
Display	Color LCD			
Software	smart-chart (smart-lab Gloss)			

System Diagram



Dimensions (Units: mm)



- KONICA MINOLTA, the Konica Minolta logo and symbol mark, and "Giving Shape to Ideas" are registered trademark or trademarks of Konica Minolta, Inc.
- Displays shown are for illustration purpose only.
- The specifications and appearance shown herein are subject to change without notice.

SAFETY PRECAUTIONS

For correct use and for your safety, be sure to read the instruction manual before using the instrument.

● Be sure to use the specified batteries. Using improper batteries may cause a fire or electric shock.



KONICA MINOLTA, INC.
Konica Minolta Sensing Americas, Inc.
Konica Minolta Sensing Europe B.V.

Osaka, Japan
 New Jersey, U.S.A.
 European Headquarter /BENELUX
 German Office
 French Office
 UK Office
 Italian Office
 Swiss Office
 Nordic Office
 Polish Office
 Turkish Office
 SE Sales Division
 Beijing Office
 Guangzhou Office
 Chongqing Office
 Qingdao Office
 Wuhan Office

Konica Minolta (CHINA) Investment Ltd.

Konica Minolta Sensing Singapore Pte Ltd.
Konica Minolta Sensing Korea Co., Ltd.

Addresses and telephone/fax numbers are subject to change without notice. For the latest contact information, please refer to the KONICA MINOLTA Worldwide Offices web page :

Phone : 888-473-2656 (in USA), 201-236-4300 (outside USA)

Phone : +31 (0)30 248-1193
Phone : +49 (0)89 4357 156 0
Phone : +33 (0)1 80 11 10 70
Phone : +44 (0)1925 467300
Phone : +39 02849488.00
Phone : +41 (0)43 322-9800
Phone : +46 (0)31 7099464
Phone : +48 (0)71 73452-11
Phone : +90 (0) 216-528 56 56
Phone : +86- (0)21-5489 0202
Phone : +86- (0)10-8522 1551
Phone : +86- (0)20-3826 4220
Phone : +86- (0)23-6773 4988
Phone : +86- (0)532-8079 1871
Phone : +86- (0)27-8544 9942
Phone : +65 6563-5533
Phone : +82 (0)2-523-9726

Fax : 201-785-2482
Fax : +31 (0)30 24 81 211
Fax : +49 (0)89 4357 156 99
Fax : +33 (0)1 80 11 10 82
Fax : +44 (0)1925 711143
Fax : +39 02849488.30
Fax : +41 (0)43 322-9809
Fax : +48 (0)71 734 52 10
Fax : +90 (0) 212-253 49 69
Fax : +86- (0)21-5489 0005
Fax : +86- (0)10-8522 1241
Fax : +86- (0)20-3826 4223
Fax : +86- (0)23-6773 4799
Fax : +86- (0)532-8079 1873
Fax : +86- (0)27-8544 9991
Fax : +65 6560-9721
Fax : +82 (0)31-995-6511

<http://konicaminolta.com/instruments/network>